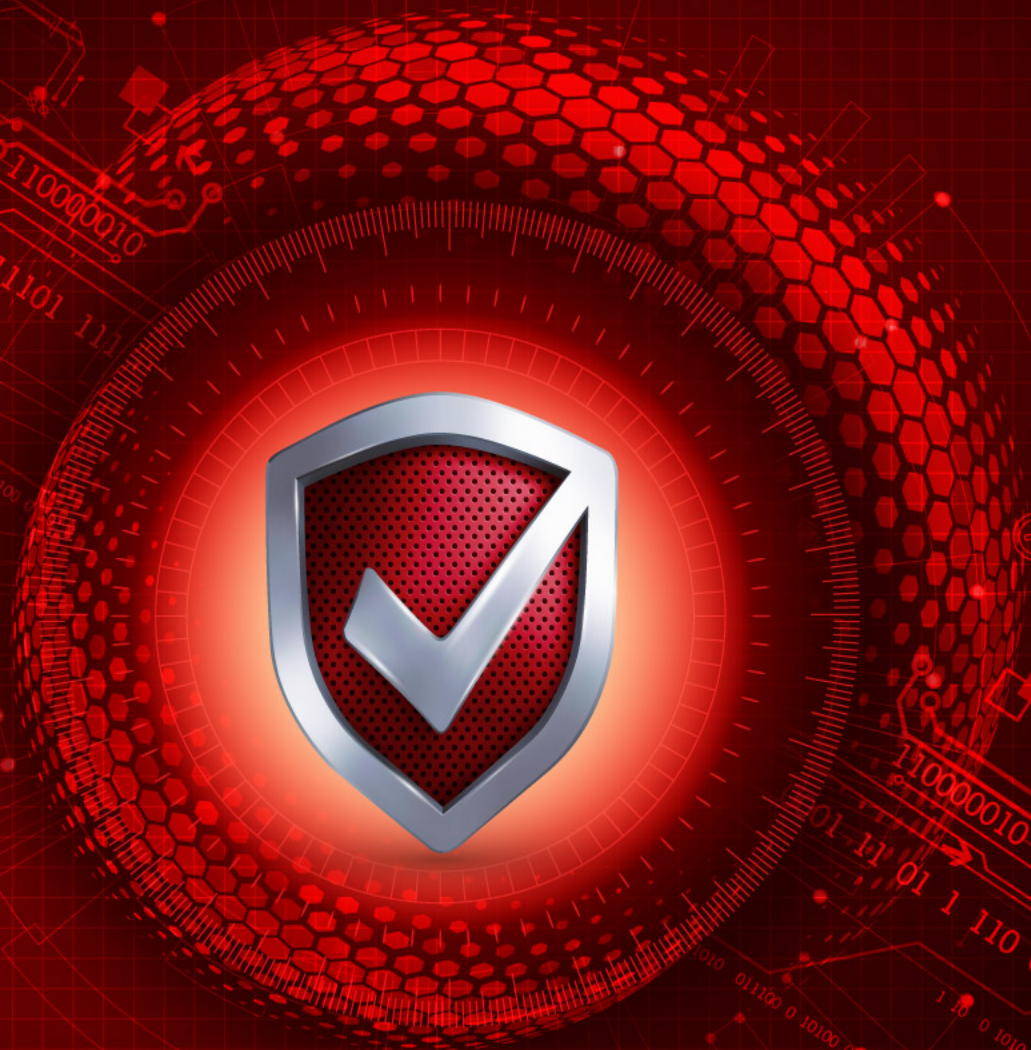


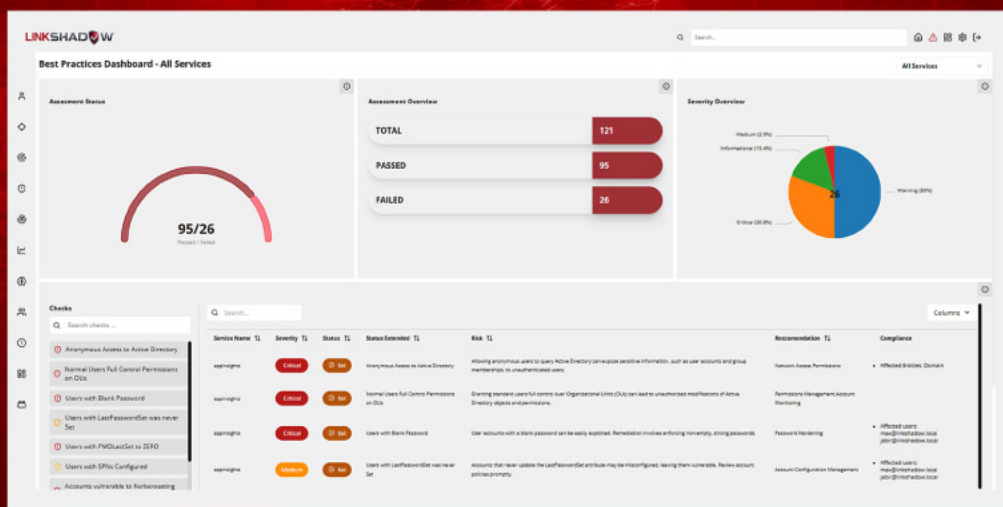
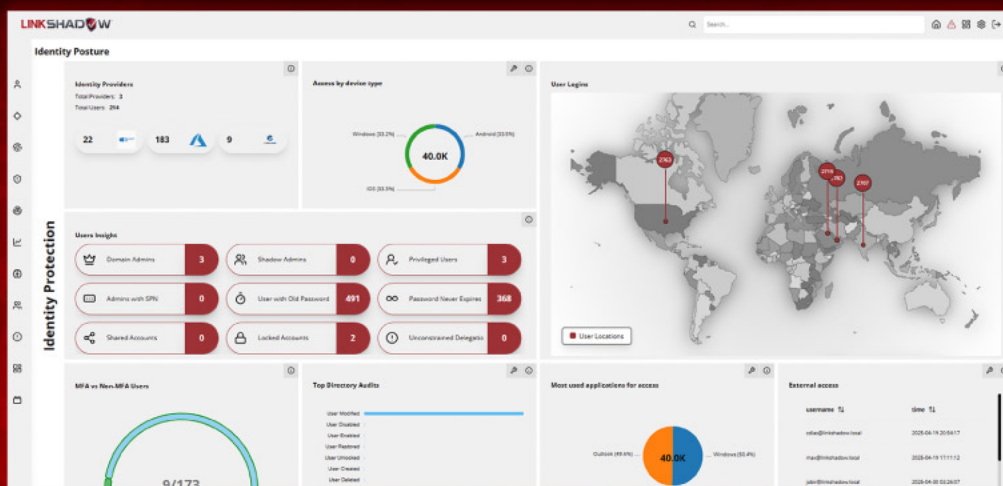


Identity Threat Detection & Response

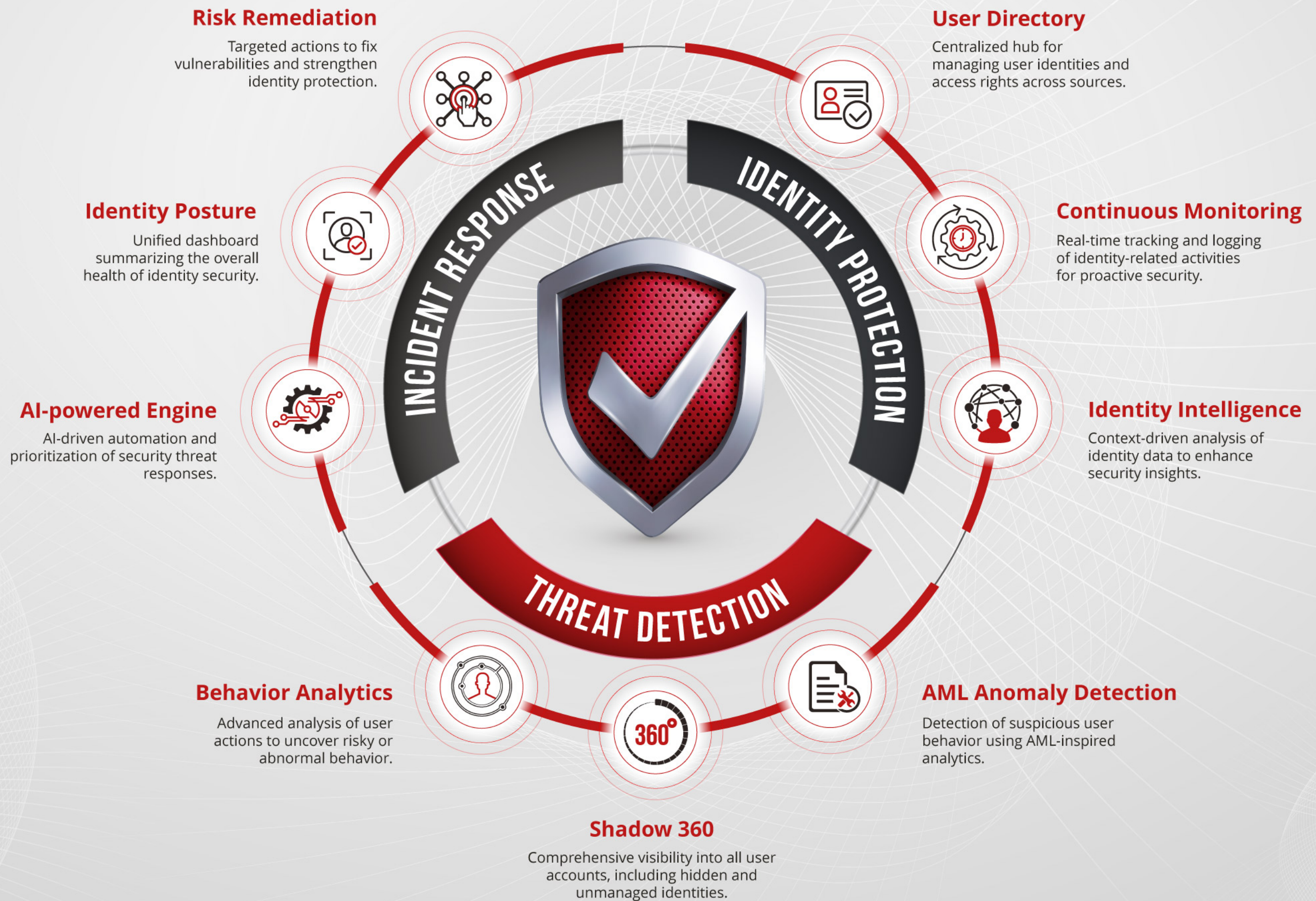
— Powered by AI —



Securing Identities with AI



Identity Threat Detection and Response (ITDR) is a comprehensive cybersecurity approach designed to safeguard digital identities and protect organizations from identity-based attacks. This emerging discipline combines advanced tools, processes, and best practices to address the growing threat landscape targeting user identities and access management systems.



Benefits

Enhanced Identity Threat Detection

ITDR solutions provide continuous monitoring of user activities and access management logs, leveraging advanced analytics and machine learning to detect identity-based threats in real time.



AI/ML-Powered Analytics

AI/ML enhances detection by identifying misconfigurations, policy deviations, and weak identity management implementations from vast identity data.



Automated Response Capabilities

Instantaneous countermeasures against detected threats to minimize the window of opportunity for attackers.





REQUEST FOR A DEMO

USA - Headquarters:

Suite 444, 320 E Clayton Street, Athens, Georgia 30601, USA
T: +1 877 267 7313

Regional Offices:

UAE

Office 1606
Mazaya Business Avenue
BB2 JLT Dubai, UAE
P.O. Box 95679
T: +971 4 408 7555

KSA

P.O Box: 4055
Leaders 2 Tower, 6th Floor
Office 62, King Fahad Road
Riyadh - KSA
T: +966 11 456 6672

UK

3rd Floor
12 Gough Square
London, EC4A 3DW
T: +44 20 4524 4205

India

1st Floor
Carnival Infopark Phase 1
Infopark Campus, Kakkanad
P.O. Box 682042, Kochi - Kerala

Netherlands

Gustav Mahlerplein 2
1082 MA Amsterdam
The Netherlands
T: +31 20 225 3099

